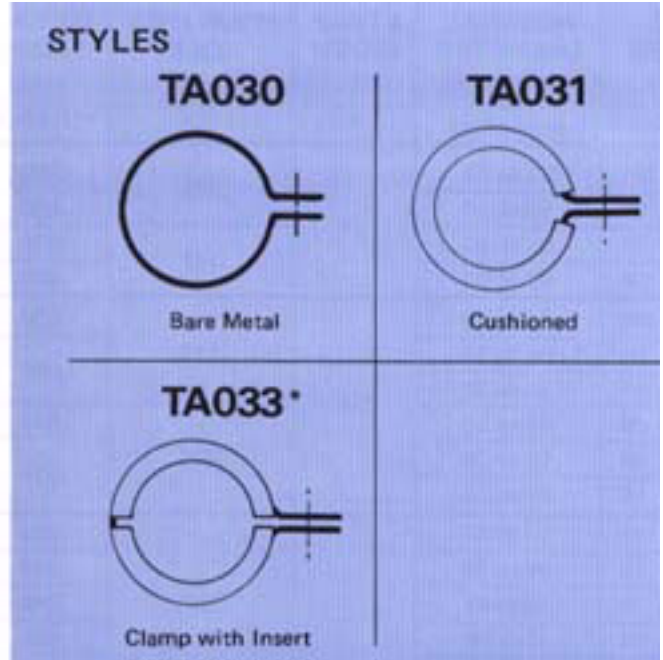
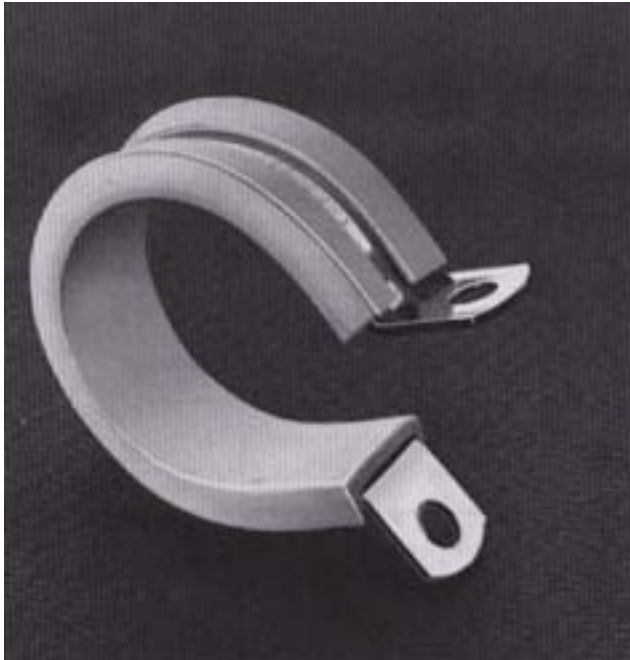


Bulletin 300: Clamp, Center Mount



* For specifying Style TA033, with elastomer insert, consult TA Sales Representative for details.

Part Numbering System

ex: TA03306SC16T = Center mount clamp with teflon insert, for 1.00" dia. tube and having .173" dia. mounting hole. Made from 1010 steel, cadmium plated .030" thick, 3/8" wide.

Breakdown:

Part number shown below is separated for clarity. When ordering, do not show spaces.

TA033 06 SC 16 T

- TA033 = Basic Part Number
- 06 = Design Detail (See below)
- SC = Metal Identification (See Bulletin 120)
- 16 = Diameter in 1/16" Increments (Show as a minimum of 2 digits)
- T = Cushion Code or Plastic Insert Code (See Bulletins 120 and 130)

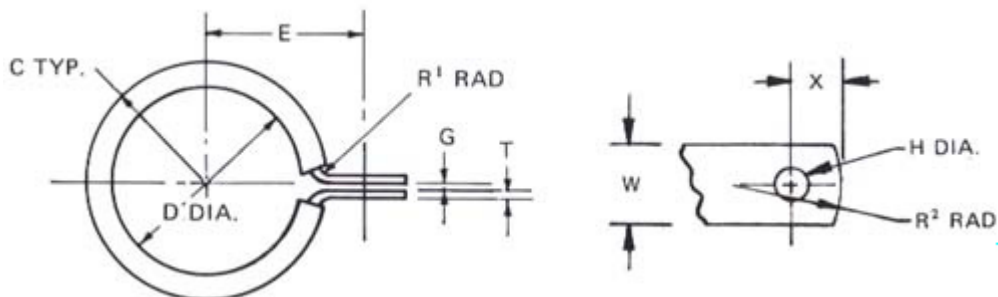


Diagram ID ▶	Nominal Dia. expressed in 1/16" increments	Strap Width	Mounting Hole	Metal Gauge	Mounting Dimension D/2+	Clearance D/2+	Gap	Cut Off	Rad	
	D	W	H	T	E	C	G	X	R ¹	R ²
Tolerances ▶		+/- .003	+/- .005	Per Spec.	+/- .015	Ref.	Ref.	+/- .010	+/- .015	+/- .015
Part Number										
TA03()01	01 to 20	1/4	.128	.020	.212	.110	1/16	.156	1/16	1/4
02	02 to 20	1/4	.128	.030	.224	.120	1/16	.156	1/16	1/4
03	01 to 20	1/4	.147	.020	.228	.110	1/16	.188	1/16	3/8
04	02 to 20	1/4	.147	.030	.240	.120	1/16	.188	1/16	3/8
TA03()05	01 to 20	3/8	.173	.020	.310	.130	1/16	.188	1/16	3/8
06	02 to 20	3/8	.173	.030	.322	.140	1/16	.188	1/16	3/8
07	21 to 32	3/8	.173	.030	.322	.140	1/8	.188	1/16	3/8
08	01 to 20	3/8	.204	.020	.310	.130	1/16	.188	1/16	3/8
09	02 to 20	3/8	.204	.030	.322	.140	1/16	.188	1/16	3/8
10	21 to 32	3/8	.204	.030	.322	.140	1/8	.188	1/16	3/8
TA03()11	02 to 20	1/2	.204	.020	.390	.160	1/16	.218	1/16	3/8
12	02 to 24	1/2	.204	.030	.402	.170	1/16	.218	1/16	3/8
13	09 to 48	1/2	.204	.040	.460	.180	3/32	.218	1/16	3/8
14	11 to 64	1/2	.204	.050	.490	.190	3/32	.218	1/8	3/8
15	33 to 96	1/2	.204	.060	.534	.200	1/8	.218	1/8	3/8
16	02 to 12	1/2	.281	.020	.503	.160	1/16	.312	1/16	1/2
17	02 to 24	1/2	.281	.030	.514	.170	1/16	.312	1/16	1/2
18	12 to 48	1/2	.281	.040	.524	.180	1/8	.312	1/8	1/2
19	17 to 64	1/2	.281	.050	.534	.190	1/8	.312	1/8	1/2
20	33 to 96	1/2	.281	.060	.544	.200	1/8	.312	1/8	1/2
TA03()21	02 to 16	5/8	.281	.030	.514	.170	1/16	.312	1/16	1/2
22	17 to 96	5/8	.281	.050	.534	.190	1/8	.312	7/64	1/2
23	02 to 16	5/8	.344	.030	.514	.170	1/16	.312	1/16	1/2
24	17 to 96	5/8	.344	.050	.534	.190	1/8	.312	7/64	1/2
25	02 to 16	5/8	.406	.030	.514	.170	1/16	.312	1/16	1/2
26	17 to 96	5/8	.406	.050	.534	.190	1/8	.312	7/64	1/2
TA03()27	02 to 10	3/4	.204	.030	.470	.170	1/16	.250	1/16	1/2
28	11 to 20	3/4	.204	.040	.480	.190	1/8	.250	1/16	1/2
29	21 to 64	3/4	.204	.050	.490	.170	1/8	.250	1/8	1/2
30	02 to 16	3/4	.281	.030	.514	.180	1/16	.312	1/16	1/2
31	17 to 96	3/4	.281	.050	.534	.190	1/8	.312	1/8	1/2
32	02 to 16	3/4	.344	.030	.514	.170	1/16	.312	1/16	1/2
33	17 to 96	3/4	.344	.050	.534	.190	1/8	.312	1/8	1/2
34	02 to 16	3/4	.406	.030	.514	.170	1/16	.312	1/16	1/2
35	17 to 96	3/4	.406	.050	.534	.190	1/8	.312	1/8	1/2
36	02 to 16	3/4	.531	.030	.623	.170	1/16	.375	1/16	5/8
37	17 to 96	3/4	.531	.050	.643	.190	1/8	.375	1/8	5/8
TA03()38	02 to 16	1	.531	.030	.623	.170	1/16	.375	1/16	5/8
39	17 to 96	1	.531	.050	.643	.190	1/8	.375	1/8	5/8

This document is the property of Kirkhill-TA and is conveyed with the express condition that it and the information contained in it are not to be used, disclosed or reproduced in whole or in part, for any purpose without the express written consent of Kirkhill-TA; and that no right is granted to disclose or so use any information contained in said document. These restrictions do not apply to vendor proprietary parts.