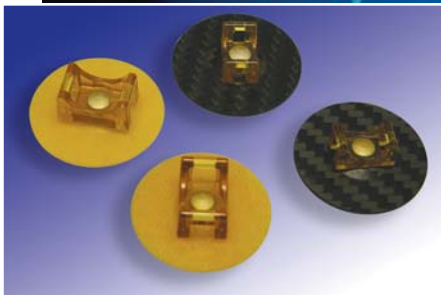


# NMC

# SWIFTBOND™

Swiftbond components are available in:  
Ultem, Glass/Epoxy, Carbon/Epoxy  
for environments to 350°F



## NMC Swiftbond™ Adhesive Bonded Fasteners

NMC has expanded its line of wire and cable management products with the introduction of Swiftbond adhesive bonded fasteners and cable supports.

The Swiftbond line consists of a wide range of standoffs, angle brackets, cable tie mounts, mounts with clamps, stud mounts, nut plates, and threaded insert attachments.

Swiftbond products feature an integrated clamping fixture. For ease of installation and reduced installation labor, a structural adhesive is applied to the attachment assembly. Acrylic or epoxy adhesives can be used, depending on the application's requirements. Protective film is removed from the pressure sensitive adhesive on the clamping fixture. The assembly is then pressed onto the structure surface. The clamping fixture is actuated applying uniform pressure to the structural adhesive while it cures. The clamping fixture is removed after cure is achieved.

The result is an attachment point that has been reliably secured to the structure without drilling holes. Structural integrity is not compromised and labor is reduced.

### **Nylon Molding Corporation / Div. of NMC Group, Inc.**

2755 Thompson Creek Road • Pomona, CA 91767-1861

(800) 321-1243 • (909) 451-2290 • Fax: (909) 593-8309 • [www.nmcgroup.com](http://www.nmcgroup.com)

ISO 9100-2000 • AS9100B



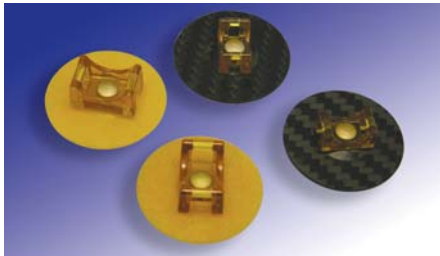
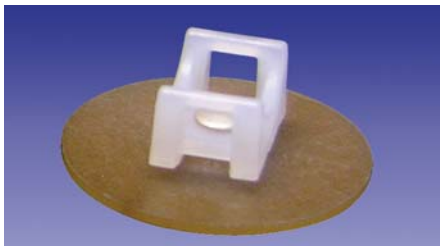
# NMC

# SWIFTBOND™

## NMCSB5000 Mount, Cable Tie

Base is made of Ultem 2300, heat resistance to 350°F. Cable tie mount is available in 6/6 nylon or Ultem 1000. Cable tie mount swivels 360° and is available in three sizes. BACM14L

Components are available in carbon fiber/epoxy, glass fiber/epoxy, steel, aluminum.



## NMCSB6000 Series Right Angle Mount

Made of Ultem 2300 capable of 350°F operating environments. Available in five lengths, trimmed, or untrimmed.

## NMCSB6000 Right Angle Cable Tie

Ultem 1000 cable tie mount swivels 360° and is available in three sizes. BACM14J



## NMCSB6010 Right Angle Mount

Self-locking floating nut plate. Available in 8-32 or 10-32 threads. BACM14H



## NMCSB6030 Right Angle Mount

Nut self-locking. Available in 8-32 or 10-32 threads.



## NMCSB7000 Standoff Cable Tie Mount

Cable tie mount is available in 6/6 nylon or Ultem 1000. Cable tie mount swivels 360° and is available in three sizes. BACM14KU and AG



## NMCSB7010 Standoff Self-Locking Floating Nut Plate

Made of Ultem 2300 capable of 350°F operating environments. Available in 8-32 or 10-32 threads.



## NMCSB8000 Series Standoff Spacer with Insert

1/4" diameter Made of Ultem 2300 capable of 350°F operating environments. Available in 14 lengths, trimmed, or untrimmed. 6-32, 8-32, 10-32 threads are available. BACS2IDZ



## NMCSB8020 Standoff Locking thread

0.62" diameter. Available in 14 lengths, 6-32, 8-32, 10-32 threads.



# NMC

# SWIFTBOND™

## NMCSB8000 Series Standoff Spacer with Insert

1/4" diameter Made of Ultem 2300 capable of 350°F operating environments. Available in 14 lengths, trimmed, or untrimmed. 6-32, 8-32, 10-32 threads are available. BACS21DZ



## NMCSB8110 Stud Bonded Threaded

Made of Ultem 2300 capable of 350°F operating environments. Base options include locating pin, trimmed, or untrimmed. Studs are available in length increments of 1/8", 6-32, 8-32, 10-32 threads in Stainless Steel or Titanium. BACS21DY



## NMCSB9000 Cable Tie Anchor

Made from Ultem 2300 capable of 350°F operating environments.



## NMCSB9010 Transverse Cable Tie Anchor

Made of Ultem 2300 capable of 350°F operating environments.

## NMCSB9020 Small Cable Tie Anchor

Made of Ultem 2300 capable of 350°F operating environments.

## NMC IF2004, NMC IF1112 Insulation Blanket-Disc and Standoff Fastener

Attach to the aircraft by structural adhesive, VHB adhesive tapes, screwed to threaded attachments, or snapped into place. Made of 6/6 Nylon.



## AirBus Adhesive Bonded Fasteners

Available to meet Airbus Standards, and are available to meet:

ABS 1545	ABS 1718
ABS 1546	ABS 1719
ABS 1717	