

NMC

NMC 557- (Series)

SPLIT PLASTIC GROMMET

Conforms to: NAS 557



NMC Split Plastic Grommet for Round Holes

Split plastic grommets are precision molded to offer easy installation in round holes, producing resultant hole sizes of 3/16" to 3" diameter. Benefits include excellent insulation as well as scuff protection on smooth inner surfaces for wire bundles, cable or tubing. They protect cables from damage by sharp-edged holes, thus eliminating costly repairs. Split plastic grommets from NMC are available in sizes to fit firmly in normal bulkhead material thicknesses (.025 – .125).

NMC has full engineering specifications available for all items shown here. Contact us for further information.



Nylon Molding Corporation / Div. of NMC Group, Inc.

2755 Thompson Creek Road • Pomona, CA 91767-1861

(800) 321-1243 • (909) 451-2290 • Fax: (909) 593-8309 • www.nmcgroup.com

ISO 9100-2000 • AS9100B

NMC

NMC 557- (Series)

SPLIT PLASTIC GROMMET

Conforms to: NAS 557

MATERIAL:

Nylon 6/6 per ASTM D4066 (PA 0111)
(For applications to 275°F)

COLORS:

Natural

CODE:

Part number designates grommet size as indicated in Table I.

Dash number must be suffixed by sheet thickness designation as indicated in Table II.

EXAMPLE:

NMC 557-3A

Split plastic grommet having .188 installed I.D. for installation in a .234 hole in .025 to .051 sheet.

CONFORMS TO:

NAS 557

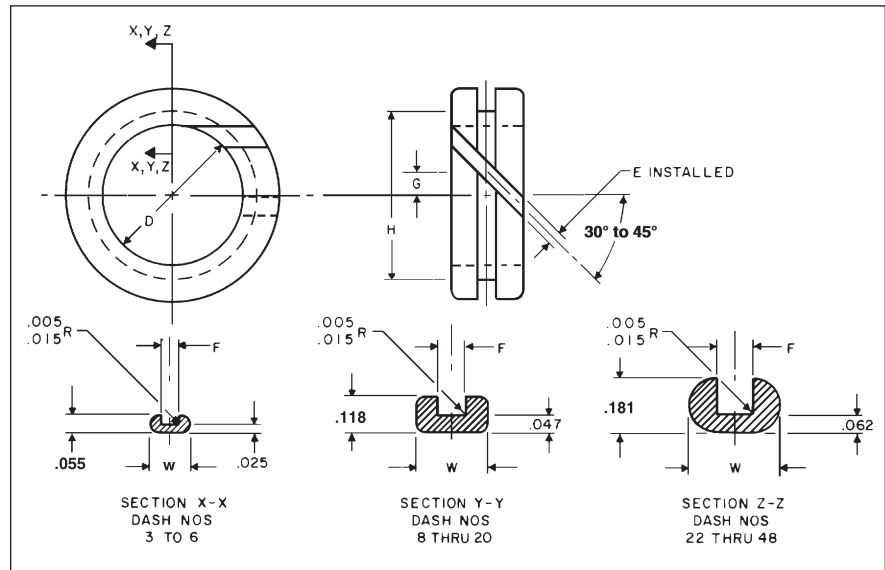


TABLE I

PART NUMBER	D INSTALLED DIA.	STRUCTURAL HOLE DIA. (REF)	E MAX. INSTALLED	G	H DIA.	SECTION
NMC 557-3(*)	.188	.234	.030	.015	.241	X-X
NMC 557-4(*)	.250	.296		.046	.303	
NMC 557-6(*)	.375	.422		.093	.429	
NMC 557-8(*)	.500	.594		.150	.601	
NMC 557-10(*)	.625	.719	.047	.182	.726	Y-Y
NMC 557-12(*)	.750	.844		.213	.851	
NMC 557-14(*)	.875	.969		.244	.976	
NMC 557-16(*)	1.000	1.094		.275	1.101	
NMC 557-18(*)	1.125	1.219		.401	1.226	
NMC 557-20(*)	1.250	1.344		.488	1.351	
NMC 557-22(*)	1.375	1.500		.531	1.507	
NMC 557-24(*)	1.500	1.625	.062	.576	1.632	Z-Z
NMC 557-28(*)	1.750	1.875		.732	1.882	
NMC 557-32(*)	2.000	2.125		.820	2.132	
NMC 557-36(*)	2.250	2.375		.908	2.382	
NMC 557-40(*)	2.500	2.625		.997	2.632	
NMC 557-44(*)	2.750	2.875		1.085	2.882	
NMC 557-46(*)	2.875	3.000		1.130	3.007	
NMC 557-48(*)	3.000	3.125		1.173	3.132	

TABLE II*

STYLE	F	SHEET THICKNESS (REF.)	W		
			X-X	Y-Y	Z-Z
A	.070 - .060	.025-.051	.135	.210	.230
B	.100 - .090	.064- .081	.155	.235	.260
C	.144 - .134	.091-.125	.175	.240	.300

For more information call toll free: (800) 321-1243 or visit our website at www.nmcgroup.com