

W Series 250 Amp Contactor

The W Series is a lightweight, rugged AC contactor. It is rated at 250 Amps, 115/200 Vac, 400 Hz, 3PST-N.O., DM-DB (Double Make/Double Break) DC coil with up to 3PDT auxiliary contacts. It is available hermetically or environmentally sealed.



W Series

Applications

- Aircraft
- High-reliability applications

Features

- Compact, lightweight design
- High reliability
- Auxiliary contacts
- Fast operate and release times
- Corrosion-resistant metal enclosure
- Hermetically or environmentally sealed
- Designed to MIL-PRF-6106

Specifications

Coil Data

Nominal Operating Voltage: 28 Vdc
Maximum Pickup Voltage: 18 Vdc
Dropout Voltage: 1 to 7 Vdc
Operate Time at 24 Vdc: 40 ms, max
Release Time at 28 Vdc: 25 ms, max
Coil Resistance: Pickup= 10 Ohms +/-5%
@ 25° C; Hold = 75 Ohms +/-5% @ 25° C

Contact Data

	Main-3PST-N.O.	Aux Contacts-up to 3PDT
Voltage:	115/200 Vac, 400 HZ	28 Vdc or 115 Vac, 400 Hz
Resistive:	250 Amps	5 Amps
Inductive:	250 Amps RMS 0.9 PF Lagging 145 Amps RMS 0.75 PF Lagging	3 Amps DC, 5 Amps RMS-AC 5 Amps RMS-AC
Rupture:	1,800 Amp RMS	
Electrical Life:	50,000 cycles minimum	
Mechanical Life:	100,000 cycles minimum	

LEACH® INTERNATIONAL

Solutions for Power Switching and Control

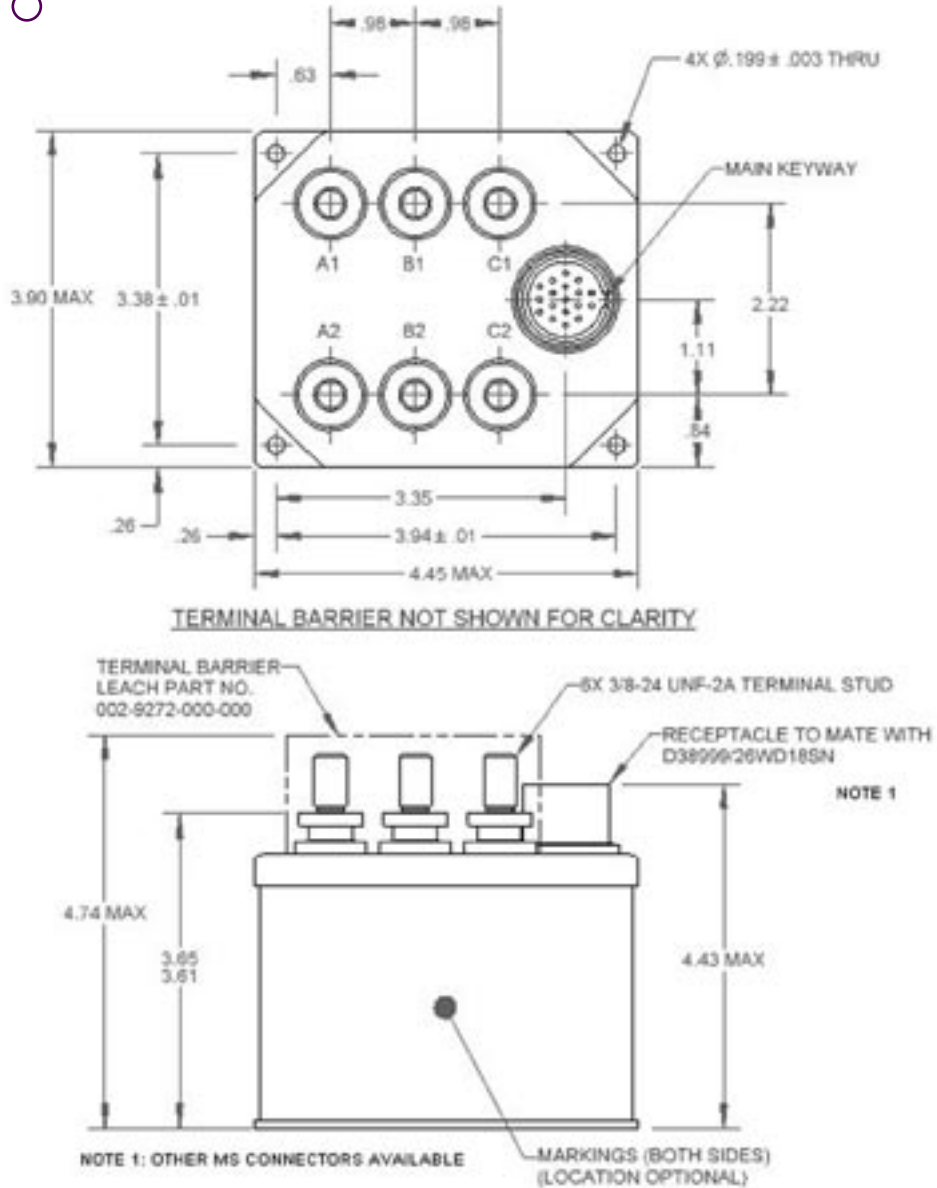
Environmental and Physical Data

Temperature Range: -55° C to +91° C

Altitude: 30,000 feet maximum (unsealed); 80,000 feet maximum (sealed)

Weight: 2.97 lb. maximum

Dimensions (LxWxH): 3.90" x 4.45" x 4.74" maximum



This preliminary datasheet is designed for initial selection and comparison of products. Please contact Leach International for a Product Control Drawing (PCD) or for further information.

LEACH[®] INTERNATIONAL

Solutions for Power Switching and Control

Leach International
Europe S.A.
2 Rue Goethe
F-57430 Sarralbe
France

Leach International
North America
6900 Orangethorpe Avenue
P.O. Box 5032
Buena Park, CA 90622-5032
USA

Leach International
Asia-Pacific Ltd.
20/F, Flat A
21-27 Wing Kut Street
Central, Hong Kong